

Shell Collector cushion pattern - English



The Shell Collector cushion is made in mind my favorite thing to do when walking across the beach and collecting shells in all kinds of colors, sizes, and shapes. You can find the most amazing and unique pieces for free, given to you by the sea. I also had a great yarn collection of sock wool, hand-dyed by the Dutch company Wol met Verve. These colorways were perfect for this pattern, as the colors definitely reminded me of the sea and shells. Enjoy this fun pattern!

Mark, a.k.a. The Guy with the Hook

Yarn Requirements: The cushion is made with hand-dyed sock yarn by the Dutch brand Wol met Verve. The skeins used are 100 grams and have a length of 420 meters. I used this sock yarn held double to create a DK-weighted thread. You can also choose to use a single DK thread instead of a fingering weight-held double. The yarn used is a basic sock yarn made of 75% wool and 25% nylon.

I used the following colors and amounts:

Color A: Slate Blue (40 grams of sock yarn held double OR 20 grams of DK yarn/ 170 meters/85 meters)

Color B: color number 0224 Plume (40 grams of sock yarn held double OR 20 grams of DK yarn/ 170 meters/85 meters)

Color C: not available any longer - white/blue/brown speckles (40 grams of sock yarn held double OR 20 grams of DK yarn/ 170 meters/85 meters)

Color D: not available any longer - white/moss green/brown speckles (40 grams of sock yarn held double OR 20 grams of DK yarn/ 170 meters/85 meters)

Color E: color number 0123 Herb Green (40 grams of sock yarn held double OR 20 grams of DK yarn/ 170 meters/85 meters)

Color F: color number 0124 Beach (40 grams of sock yarn held double OR 20 grams of DK yarn/ 170 meters/85 meters)

Color G: color number 20232189 (30 grams of sock yarn held double OR 15 grams of DK yarn/ 130 meters/65 meters)

Color H: color number 0122 Rust (30 grams of sock yarn held double OR 15 grams of DK yarn/ 130 meters/65 meters)

Color I: color number 0224 Potting Soil (80 grams of sock yarn held double OR 40 grams of DK yarn/ 336 meters/168 meters)

Crochet hook needed:

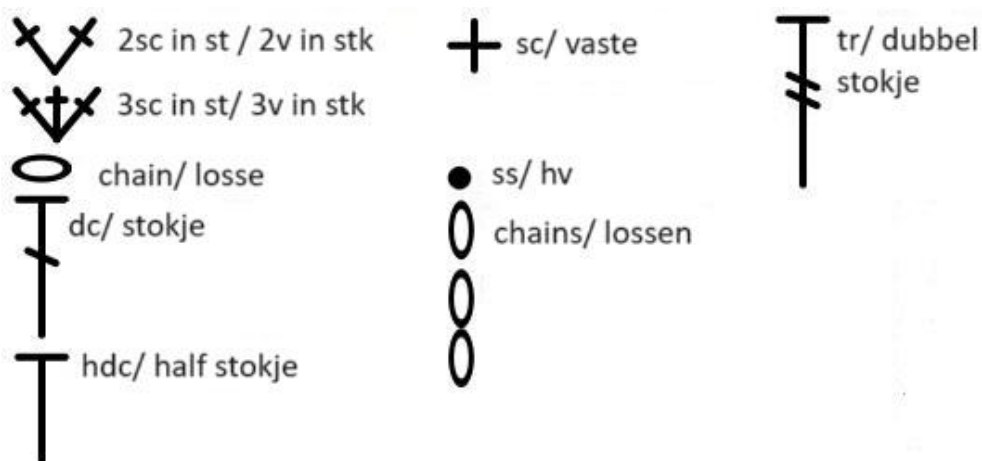
You will use a 4,0mm & 5.0mm hook for the cushion when holding the sock yarn as a double thread or the DK yarn as a single thread.

Size: one finished square for a side will measure approx 36 cm/14 inches in width and height. When adding the cushion, the finished sizes will change to 40cm/16 inches.

Other materials needed: One cushion of 40cm x 40cm/ 16 x 16 inches to fill the cushion cover.

Special notes:

- The pattern is made with fingering-weight yarn (sock yarn) held double to create a DK type of thread. You can also take a DK yarn and use a single thread. However, I decided to use this option because the options for hand-dyed yarns are much more significant in fingering weight. Using up different scraps of sock yarn held double is also a great idea.
- The square is smaller than the actual cushion to fill the cover-up. This allows the cushion to be fluffy and filled up in all four corners. The cushion will only look pretty when the cover is not too large.
- For this pattern, there are written instructions guided by a chart. I didn't add photos, as the chart give far more insight into the build-up of this dynamic pattern, which is built out of close-to-each-other stitches.
- If you want to add more shells or enlarge the square, you need to add 19 sts for each extra repeat. The pattern is built up from 19 sts for each shell part + 1 additional stitch.



Stitch abbreviations (US Terms) :

SS - slip stitch

SC - single crochet

HDC - half double crochet

BPHDC - half double crochet around the back post of the indicated stitch

DC - double crochet

TR - treble crochet

CH - chain

St - stitch/stitches

Sp - space

Sk - skip

GR - group

[] - gives the total amount of sts at the end of a Row/Round

() - information between these indicates a small repeat in a Row/Round - or sometimes a little note.

RS - Right Side of the work

WS - Wrong Side of the work

Rep - repeat

CRN - corner

***** - marks the beginning of a long repeat within a Row/Round.

In the pattern, you will make shell motifs. You will find the shell motifs pattern here to avoid an overload of pattern text. Each motif will always be made in a ch2-sp between two tr sts – except the first shell Row.

Whole Shell motif:

Ch7, ss in next ch2-sp between two tr, ch3, turn work, sk first 3 chs, 1sc in each of the next 4 chs, (ch2, turn work, 1sc in blo of next 4 sts, sk next ch3-chain, ch3, ss in the same ch2-sp, ch3, turn work, sk next ch3-chain, 1sc in blo of next 4 sts) 7 times. You will end at the top side of the shell and not the ch2-sp, where all the ch3-chains are made in. Turn by making a chain.

Begin half shell motif:

Starting in a ch2-sp between two tr.

Ch8, 1sc in second ch from hook, 1sc in each of the next 3 chs, ch3, ss in same ch2-sp, (ch3, turn work, sk next ch3-chain, 1sc in blo of next 4 sts, ch2, turn work, 1sc in blo of next 4 sts, sk next ch3-chain, ch3, ss in the same ch2-sp) 3 times, ch3, turn work, skip next ch3-chain, 1sc in blo of next 4 sts. You will end at the top side of the half shell and not the ch2-sp, where all the ch3-chains are made. Turn by making a chain.

Ending half shell motif:

Ch7, ss in next ch2-sp between two tr, ch3, turn work, sk first 3 chs, 1sc in each of the next 4 chs, (ch2, turn work, 1sc in blo of next 4 sts, sk next ch3-chain, ch3, ss in the same ch2-sp, ch3, turn work, sk next ch3-chain, 1sc in blo of next 4 sts) 3 times. You will end at the top of a half shell, not the ch2-sp, where all the ch3-chains are made.

The Pattern:

Take crochet hook size 4.0mm and Color A, ch59.

R1 (RS): 1hdc in third ch from hook – the first 2 chains form the first hdc, 1hdc in next 56 sts. Turn. [58hdc]

R2 (WS): Ch1 (doesn't count as st here and throughout entire pattern), 1sc in first st, * (ch2, sk next 2 sts, 1sc in next st) twice, ch1, sk next st, 1sc in next st, ch2, sk next 2 sts, 1sc in next st, ch1, sk next st, 1sc in next st, (ch2, sk next 2 sts, 1sc in next st) 2 times. Rep from * 2 more times. Turn. [22sc/ 6 times a ch1-sp/ 15 times a ch2-sp]

R3 (RS): Ch1, 1sc in first st, 1sc in next ch2-sp, (sk next sc-ch2-sc-ch1-sc, make a **whole shell motif** in next ch2-sp, sk next sc-ch1-sc-ch2-sc, make 1sc in next ch2-sp, ch2, sk next st, 1sc in next ch2-sp) 2 times, sk next sc-ch2-sc-ch1-sc, make a **whole shell motif** in next ch2-sp, sk next sc-ch1-sc-ch2-sc, make 1sc in next ch2-sp, 1sc in last st of side. Turn work. [8sc/ 4 times a ch2-sp and 3 whole shell motifs]

R4 (WS): Ch6 (first tr + ch2), 1tr in the same first st, ch1, *sk all sts till the second ch2-sp on the whole shell motif, 1sc in second ch2-sp on the whole shell motif, (ch3, 1sc in next ch2-sp on the whole shell motif) 4 times, ch1, make 1tr-ch2-1tr in the ch2-sp between the two sc's on previous Row, ch1. Rep from * 1 more times. Sk all sts till the second ch2-sp of the next whole shell motif, 1sc in second ch2-sp on the whole shell motif, (ch3, 1sc in next ch2-sp on the whole shell motif) 4 times, ch1, 1tr-ch2-1tr in last st. Fasten off Color A. [4 gr of 1tr-ch2-1tr/ 6 times a ch1-sp/ 3 gr of 5sc-4 times a ch3-sp]

R5 (RS): Take Color B and attach it in the first ch2-sp between two tr at the RS of the work. Make a **begin half shell motif**, make a sc in the second ch3-sp on the whole shell motif, ch2, 1sc in next ch3-sp on the whole shell motif, (make a **whole shell motif** in the next ch2-sp between the two tr, make a sc in the second ch3-sp on the whole shell motif, ch2, 1sc in next ch3-sp on the whole shell motif) 2 times, make an **ending half shell motif** in the last ch2-sp between the two tr, once finished make a ch to turn the work. [3 gr of 1sc-ch2-1sc/ 1 begin half shell motif/ 2 whole shell motif/ 1 ending half shell motif]

R6 (WS): 1sc in the top of the half shell you ended with in the last Row, (ch3, 1sc in next ch2-sp of the half shell motif) twice, ch1, 1tr-ch2-1tr in next ch2-sp between two sc's of previous Row, ch1, * sk all sts till second ch2-sp on the next whole shell motif, 1sc in second ch2-sp on the whole shell motif, (ch3, 1sc in next ch2-sp on the whole shell motif) 4 times, ch1, 1tr-ch2-1tr in next ch2-sp between the two sc's on the previous Row, ch1. Rep from * 1 more times. Sk all sts till the second ch2-sp on the next half shell motif, 1sc in second ch2-sp on the half shell motif, ch3, 1sc in next ch2-sp of the half shell motif, ch3, 1sc at the top side of the half shell motif. Fasten off Color B. [2 gr of 3sc-2 times a ch3-sp/ 2 gr of 5sc-4 times a ch3-sp/ 3 gr of 1tr-ch2-1tr/ 6 times a ch1-sp]

R7 (RS): Take Color C and attach it in the first st at the RS of the work. Ch1, 1sc in first st, 1sc in next ch3-sp, (sk all sts till next ch2-sp between the two tr, make 1 **whole shell motif** in the ch2-sp, make 1sc in the second ch3-sp on the next whole shell motif, ch2, sk next st, 1sc in next ch3-sp on the whole shell motif) 2 times, make 1 **whole shell motif** in the next ch2-sp between the 2 tr, make 1sc in the second ch3-sp of the next half shell motif, 1sc in last st. Turn. [4sc/ 2 gr of 1sc-ch2-1sc/ 3 whole shell motifs]

R8 (WS): With Color C, Rep R4. Fasten off Color C at the end of the Row. [3 gr of 1tr-ch2-1tr/ 6 times a ch1-sp/ 3 gr of 5sc-4 times a ch3-sp]

R9 (RS): With Color D, Rep R5. [3 gr of 1sc-ch2-1sc/ 1 begin half shell motif/ 2 whole shell motif/ 1 ending half shell motif]

R10 (WS): With Color D, Rep R6. Fasten off Color D at the end of the Row. [2 gr of 3sc-2 times a ch3-sp/ 2 gr of 5sc-4 times a ch3-sp/ 3 gr of 1tr-ch2-1tr/ 6 times a ch1-sp]

R11 (RS): With Color E, Rep R7. [4sc/ 2 gr of 1sc-ch2-1sc/ 3 whole shell motifs]

R12 (WS): With Color E, Rep R4. Fasten off Color E at the end of the Row. [3 gr of 1tr-ch2-1tr/ 6 times a ch1-sp/ 3 gr of 5sc-4 times a ch3-sp]

R13 (RS): With Color F, Rep R5. [3 gr of 1sc-ch2-1sc/ 1 begin half shell motif/ 2 whole shell motif/ 1 ending half shell motif]

R14 (WS): With Color F, Rep R6. Fasten off Color F at the end of the Row. [2 gr of 3sc-2 times a ch3-sp/ 2 gr of 5sc-4 times a ch3-sp/ 3 gr of 1tr-ch2-1tr/ 6 times a ch1-sp]

R15 (RS): With Color G, Rep R7. [4sc/ 2 gr of 1sc-ch2-1sc/ 3 whole shell motifs]

R16 (WS): With Color G, Rep R4. Fasten off Color G at the end of the Row. [3 gr of 1tr-ch2-1tr/ 6 times a ch1-sp/ 3 gr of 5sc-4 times a ch3-sp]

R17 (RS): With Color H, Rep R5. [3 gr of 1sc-ch2-1sc/ 1 begin half shell motif/ 2 whole shell motif/ 1 ending half shell motif]

R18 (WS): With Color H, Rep R6. Don't fasten off Color H at the end of the Row, but turn. [2 gr of 3sc-2 times a ch3-sp/ 2 gr of 5sc-4 times a ch3-sp/ 3 gr of 1tr-ch2-1tr/ 6 times a ch1-sp]

R19 (RS): Ch1, 1sc in first st, 1sc in next ch3-sp, ch2, 1dc in next ch3-sp, ch2, 1tr-ch2-1tr in next ch2-sp between two tr, ch2, *1dc in next ch3-sp, ch2, (1sc in next ch3-sp, ch2) twice, 1dc in next ch3-sp, ch2, 1tr-ch2-1tr in next ch2-sp between two tr, ch2. Rep from * 1 more times. 1dc in next ch3-sp, ch2, 1sc in next ch3-sp, 1sc in last st. Turn. [8sc/6dc/6tr/ 17 times a ch2-sp]

R20 (WS): Ch2 (first hdc), 2hdc in next st, 2hdc in next ch2-sp, 1hdc in next dc, 2hdc in next ch2-sp, *1hdc in next tr, 3hdc in next ch2-sp, 1hdc in next tr, 2hdc in next ch2-sp, 1hdc in next dc, (2hdc in next ch2-sp, 1hdc in next sc) twice, 2hdc in next ch2-sp, 1hdc in next dc, 2hdc in next ch2-sp. Rep from * 1 more time, 1hdc in next tr, 3hdc in next ch2-sp, 1hdc in next tr, 2hdc in next ch2-sp, 1hdc in next dc, 2hdc in next ch2-sp, 1hdc in next 2 sts. Fasten off Color H. [58hdc]

The Border:

R1 (RS): Take Color I and attach it to the first st on the RS of R20. Ch5 (first hdc + ch3), 1hdc in same st, 1hdc in next 56 sts, 1hdc-ch3-1hdc in next st, turn to the next side, make 58 hdc divided equally over the next side, turn to the next side, 1hdc-ch3-1hdc in first st of next side, 1hdc in next 56 sts, 1hdc-ch3-1hdc in next st, turn to the next side, make 58 hdc divided equally over the next side. Ss in the second ch to connect. Ss to next ch3-crn. [4 sides with 58hdc and 4 times a ch3-crn]

R2 (RS): Ch6 (first dc + ch3), 1dc in same ch3-crn, 1dc in next 58 sts, (1dc-ch3-1dc in next ch3-crn, 1dc in next 58 sts) 3 times. Ss in the third ch to connect. Ss to next ch3-crn. [4 sides of 60dc and 4 times a ch3-crn]

R3 (RS): Ch5 (first hdc + ch3), 1hdc in same ch3-crn, 1bphdc around next 60 sts, (1hdc-ch3-1hdc in next ch3-crn, 1bphdc around next 60 sts) 3 times. Ss in the second ch to connect. Fasten off Color I. [4 sides of 2hdc/60bphdc and 4 times a ch3-crn]

Switch to the 5.0mm hook size!

R4 (RS): Take Color A and attach it to any ch3-crn. Ch1, *1sc-ch3-1sc in ch3-crn, (ch1, sk next st, 1sc in next st) over entire side, ch1, sk no st. Rep from * 3 more times. Ss in top of first st to connect. Fasten off Color A. [4 sides of 33sc/32 times a ch1-sp and 4 times a ch3-crn]

R5 (RS): Take Color B and attach it to any ch3-crn. Ch1, *1sc-ch3-1sc in ch3-crn, (ch1, sk next st, 1sc in next ch1-sp) over entire side till last st, ch1, sk next st. Rep from * 3 more times. Ss in top of first st to connect. Fasten off Color B. [4 sides of 34sc/33 times a ch1-sp and 4 times a ch3-crn.]

R6 (RS): Take Color C and rep R5. Fasten off Color C at the end of the Round. [4 sides of 35sc/34 times a ch1-sp and 4 times a ch3-crn.

R7 (RS): Take Color D and rep R5. Fasten off Color D at the end of the Round. [4 sides of 36sc/35 times a ch1-sp and 4 times a ch3-crn.

R8 (RS): Take Color E and rep R5. Fasten off Color E at the end of the Round. [4 sides of 37sc/36 times a ch1-sp and 4 times a ch3-crn.

Switch back to the 4.0mm hook size!

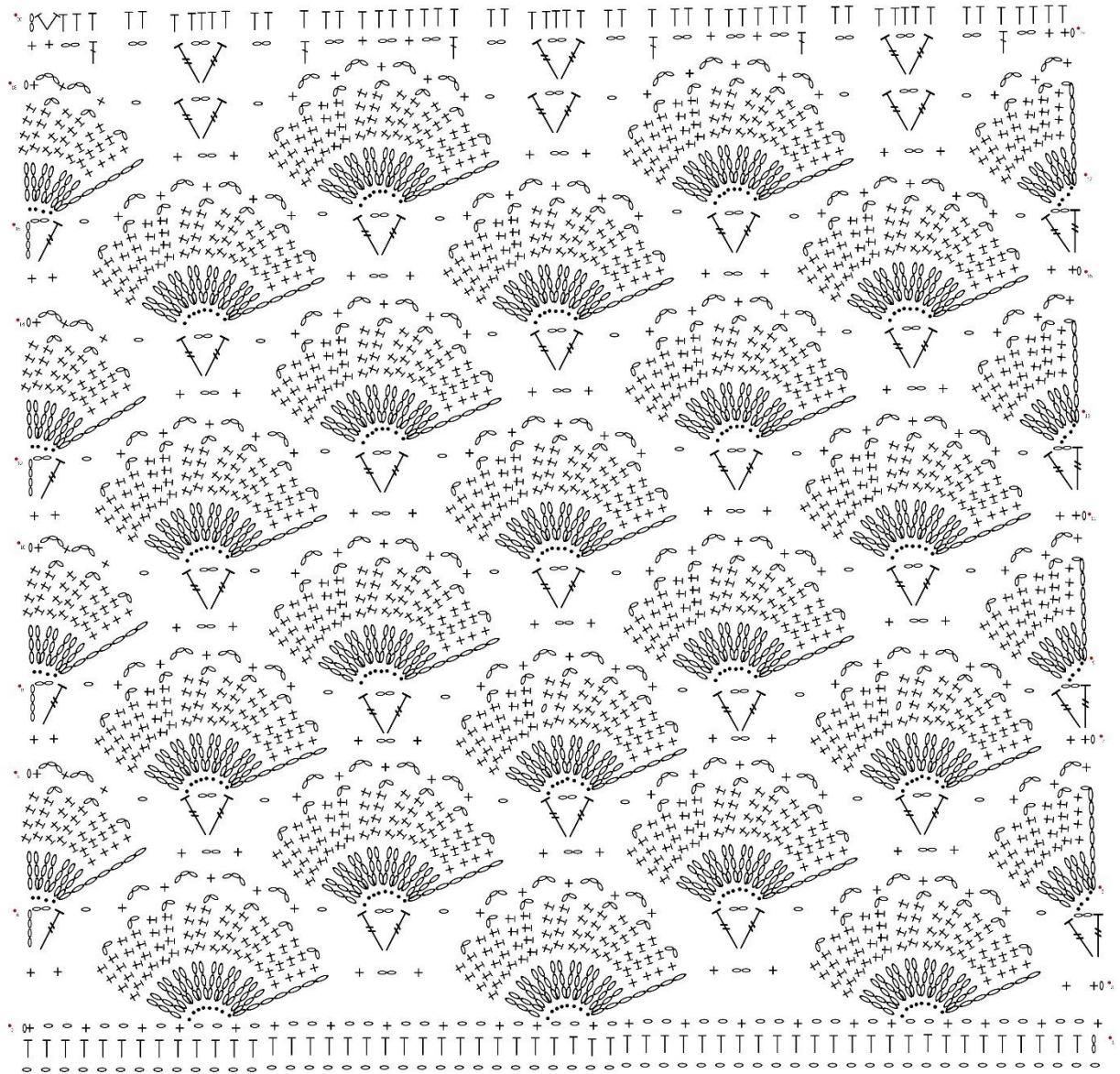
R9 (RS): Take Color I and attach it to any ch3-crn. Ch1, (1sc-ch3-1sc in ch3-crn, 1sc in each st and ch1-sp of the side) 4 times. Ss in top of first st to connect. Fasten off Color I. [4 sides of 75sc and 4 times a ch3-crn]

Weave in all ends. Now, Repeat the same shell square and border to create a second panel. When you finish this, it is time to connect them.

Connecting the two squares into a cushion:

- attach the two squares with WS facing each other together with some stitch markers.
- With Color F, crochet three sides together with ss through the sts simultaneously. When reaching a crn – crochet 3sc through both ch3-crns.
- When the 3 sides are closed, insert the cushion and crochet along the fourth side to close the cushion.
- Weave in the remaining end.

Chart for Shell center:



A big thanks to my tester:

- Tineke Tap

Designed by: *the guy with the hook* – 2024

<https://theguywiththehook.com>

<https://www.instagram.com/theguywiththehook>

<https://www.ravelry.com/projects/theguywiththehook>

<https://www.ravelry.com/designers/mark-roseboom>

<https://www.facebook.com/theguywiththehook>

All copyrights and terms of use are with me. Please do not copy or share this pattern. In 2019, I started using the international copyright rules and terms that apply to countries worldwide. It also includes countries that still need to agree to work with this accord. Recently, it has become common for crochet patterns and designs to be stolen from designers, including myself. I have no other choice but to tighten up the copyright validation. Legal action will be taken if sharing occurs in Telegram/WhatsApp groups, social media, secret groups, or websites.

*Feel free to sell finished items using this pattern. Please tag or reference me as the designer when showing your WIP's or finished projects and use the hashtag **#shellcollectorcushion** on social media to share.*

Last but not least, thank you so much for making this pattern. This little piece of art wraps a lot of time, effort, and creativity. Every creation that comes from this pattern makes all my efforts so worthwhile.

Mark, a.k.a. the guy with the hook